

VECTORWORKS®
DESIGNER

TRANSFORM THE WORLD.
**DESIGN WITH
VECTORWORKS.**





Whether your specialty is architecture, landscape, or entertainment design, **Vectorworks® Designer** software enables you to draft, model, and present in a single, intuitive interface. Enhance your workflow and follow your inspiration, explore your ideas, and discover new ways to simplify your process with Vectorworks Designer — the ultimate solution for the design professional who needs it all.

(L TO R): DESIGN BY CAIQUE NIEMEYER; DESIGN BY NICK WHITEHOUSE, ILLUMINATE ENTERTAINMENT, INC., IMAGE COURTESY OF RALPH LARMANN PHOTOGRAPHY; DESIGN BY MCGREGOR COXALL

ENHANCE YOUR **MODELING PROCESS**

Vectorworks Designer gives you more resources than ever to optimize your workflow. Whether you're creating a BIM model for your next inspired project, lighting a production, or designing an urban green space, Vectorworks software offers features that are designed with you and your workflows in mind.





INDUSTRY-LEADING 3D SOLUTIONS

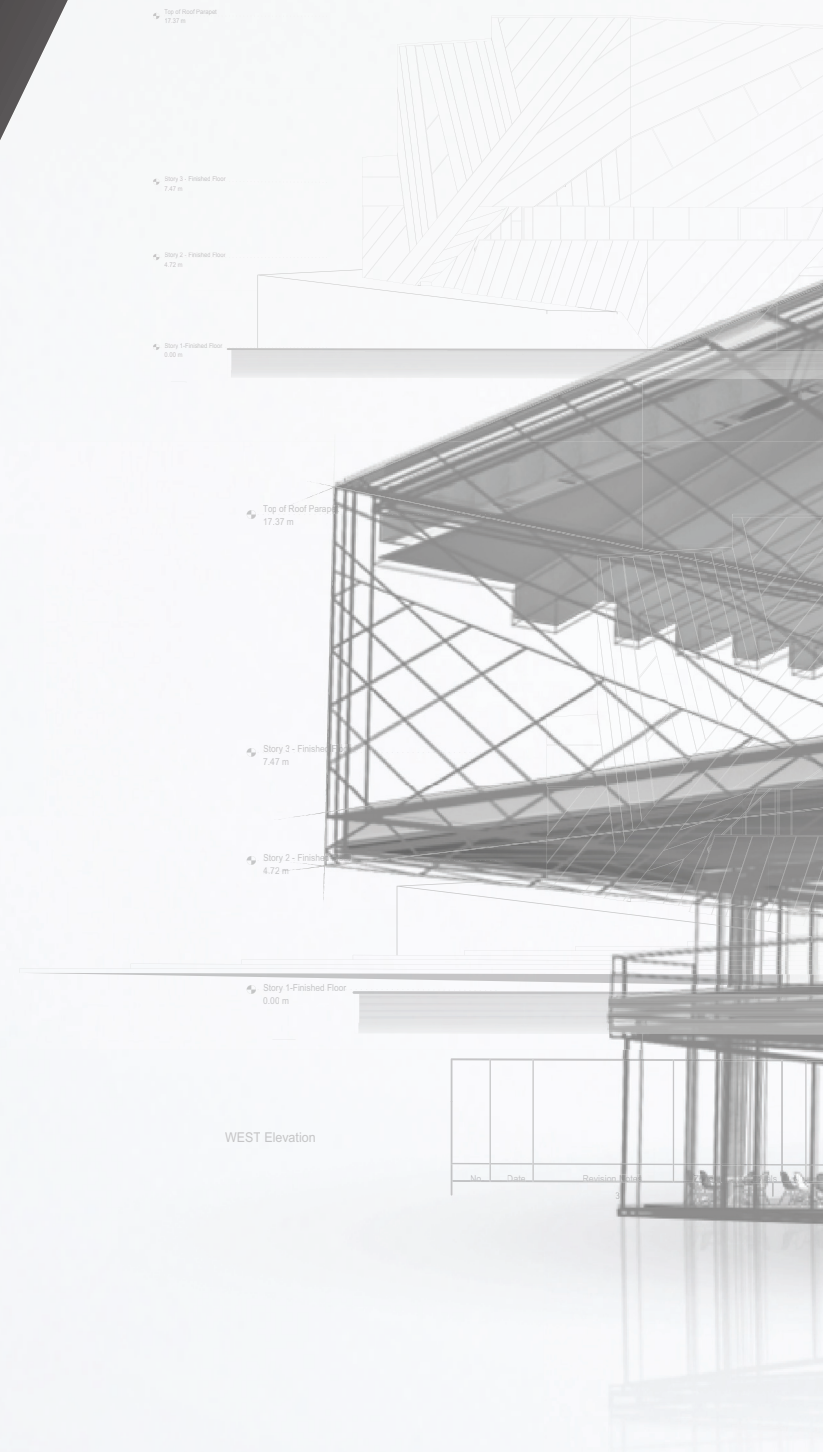
Capture your visions in 3D and design without limitations with Vectorworks Designer. With Marionette, our cross-platform graphical scripting tool, find new ways to explore form and function. Create any shape and easily transform geometry with our advanced suite of Parasolid-based solids and NURBS-surface tools.

In addition, Vectorworks Designer offers you the capability to model complex forms with our subdivision surface modeling built on Pixar®'s OpenSubdiv library. With our intuitive interface, you will design in any 2D or 3D view using modes in modeling tools that react intelligently to faces of objects as you move your cursor.

IMAGE COURTESY OF EM2N, ZÜRICH.

SIMPLIFY YOUR WORKFLOWS

Vectorworks Designer provides the right tools to help you achieve your goals on time and on budget. With the ability to streamline the creation of schedules, improve graphic output, and simplify drawing distribution, you'll be empowered to work faster and be more productive.





THE BEST IN BIM

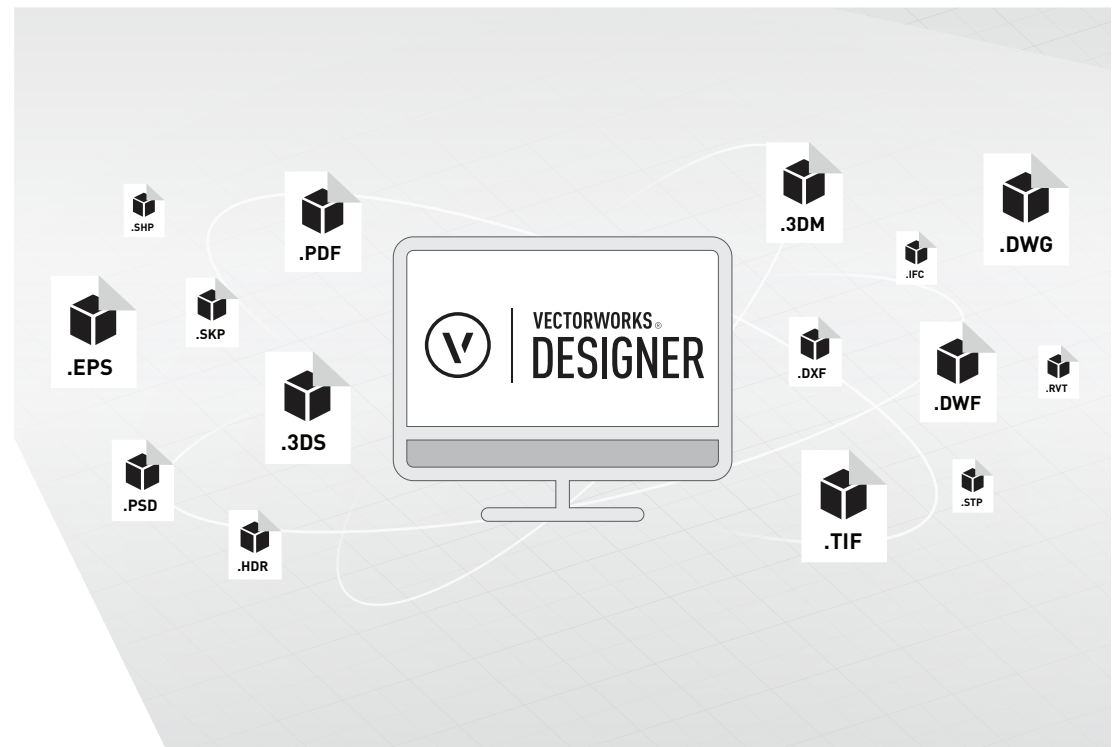
Vectorworks Designer allows you to create building information models without changing your design process. Whether you're looking to streamline costs, analyze materials, or increase your energy efficiency while creating world-class designs, our software provides an efficient way to maximize your BIM capabilities.

IMAGE INSPIRED BY HOLZER KOBLER ARCHITEKTUREN.

SEAMLESS INTEROPERABILITY

Exchange NURBS models with Rhino or import concept models from SketchUp®. Support of both import and export of OBJ, STL, and 3DS file formats lets you explore the full range of design options by incorporating information from multiple sources, making sweeping changes quickly and easily.

Using IFC, an industry-standard file format, communicate effectively with your consultants and collaborators who may be using Revit® or other BIM software — or use your model for clash detection and model checking. Vectorworks Designer supports IFC, gbXML, DWG/DXF, Revit, PDF, and more for document and model exchange.

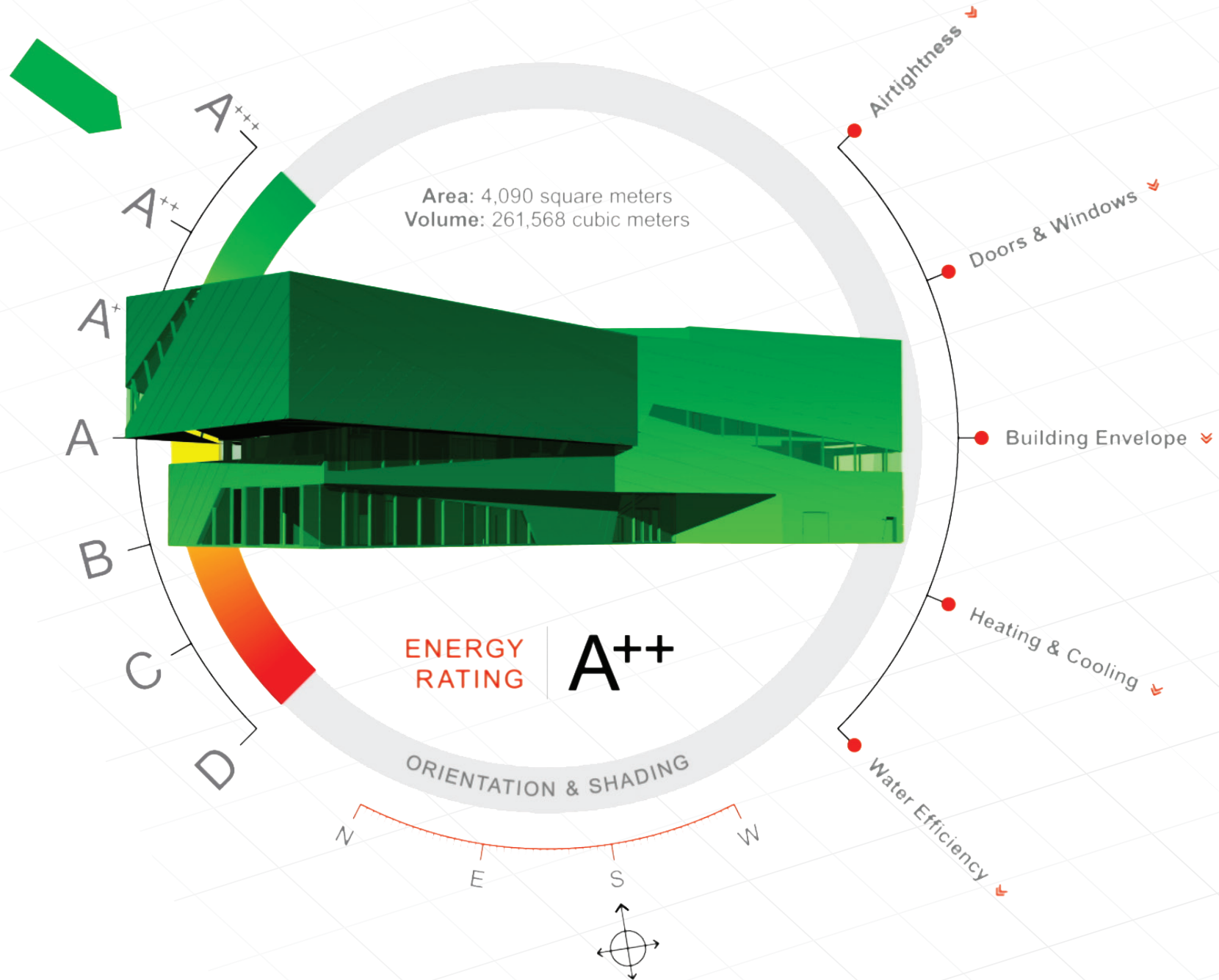


VECTORWORKS DESIGNER FILE IMPORT/EXPORT CAPABILITIES

FILE TYPE	IMPORT	EXPORT
3D PDF		●
3DS	●	●
ASCII Patch		●
BCF	●	●
Cinema 4D (.C4D)		●
C4D Textures	●	
Collada		●
Database	●	●
CSV	●	●
DWG/DXF/DWF	●	●
ECW	●	
FBX		●
gbXML		●

FILE TYPE	IMPORT	EXPORT
GIS shapefile (.SHP)	●	●
HDR/HDRI	●	●
Hoist Data	●	●
IFC (Industry Foundation Classes)	●	●
IGS/IGES	●	●
Illustrator (.EPS/.EPSF)	●	●
IMAGE FILES (GIF, BMP, TIF, JPG, PNG)	●	●
Instrument Data	●	●
KML		●
MOV		●
OBJ	●	●
Parasolid X-T	●	●
PDF	●	●

FILE TYPE	IMPORT	EXPORT
Photoshop (.PSD)	●	●
Point Cloud	●	
Python Script	●	●
Rhino (.3DM)	●	●
Revit	●	
SAT	●	●
Script	●	●
Shapefile	●	●
SketchUp (.SKP)	●	
STP/STEP	●	●
STL	●	●
Web View		●
Worksheet	●	●



RESPONSIVE

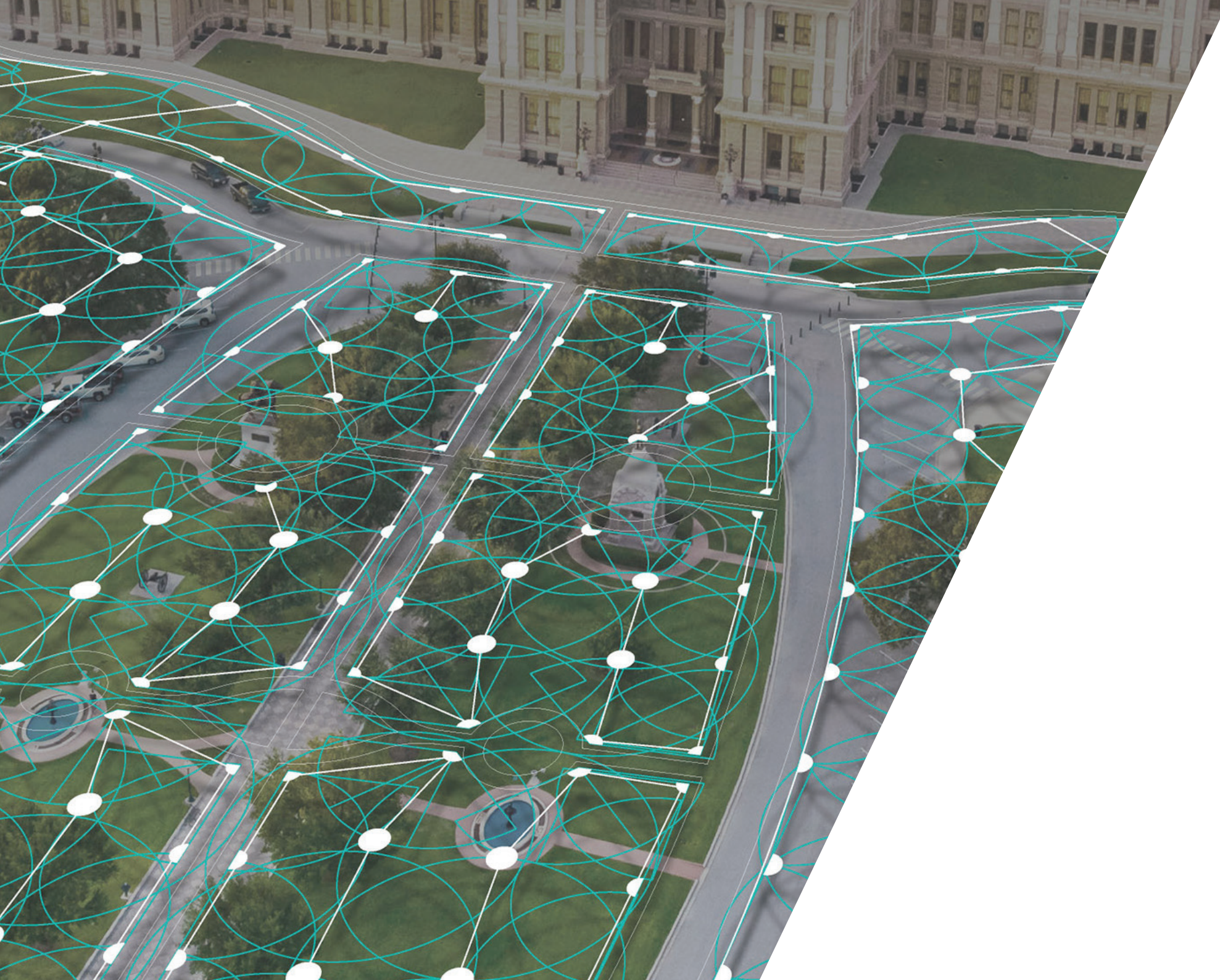
ENERGY TOOLS

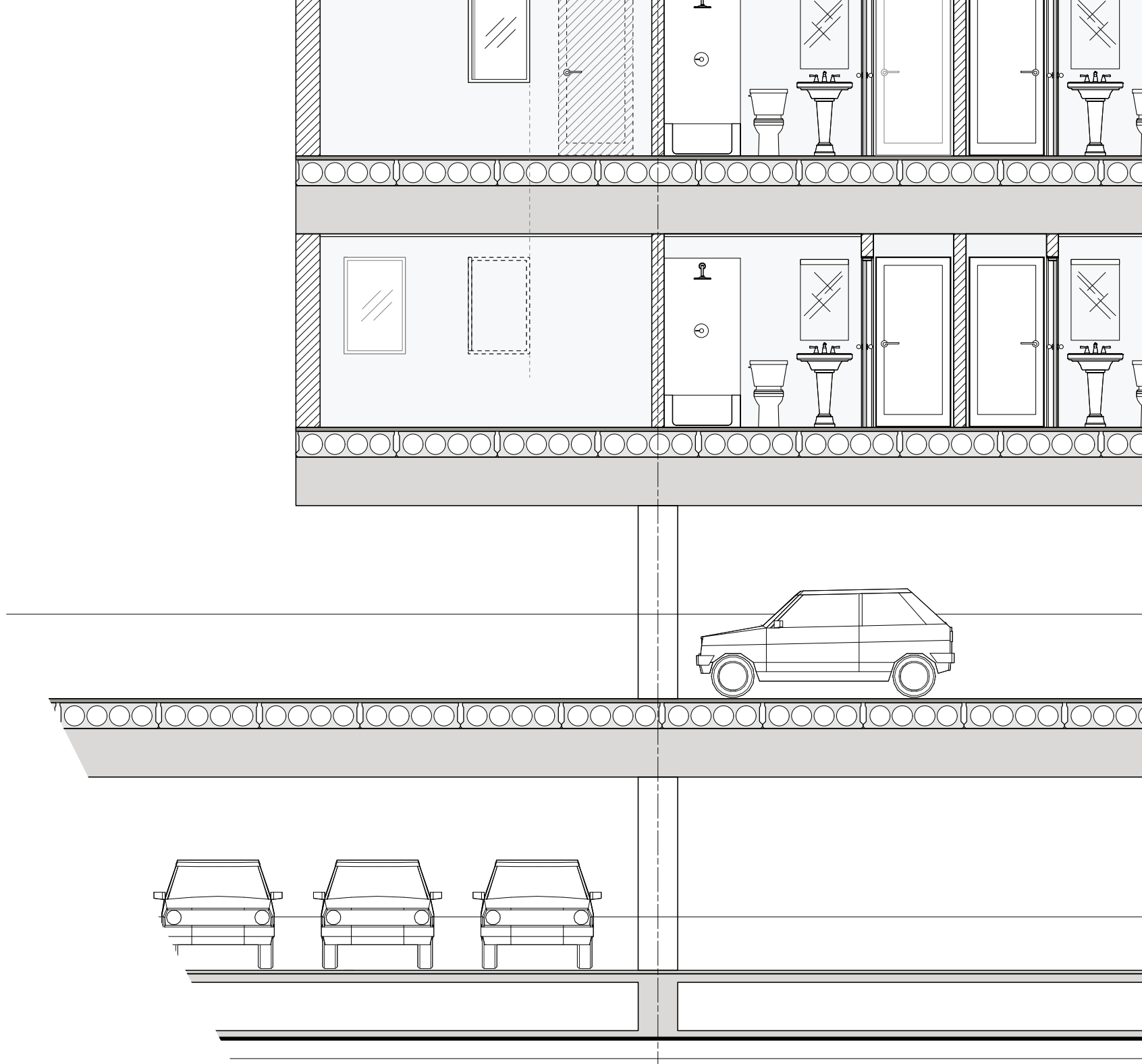
Our Energos feature is a powerful energy analysis tool for architects, so you can make sustainable design decisions throughout the design process. Based on the Passivhaus calculation method, the Energos module gives you — and your clients — a dynamic, intelligent gauge of a building's energy performance.



INNOVATIVE IRRIGATION DESIGN

Planning for a site's irrigation involves considerations and calculations related to both its physical features and resource availability. Vectorworks software meets all of these needs with innovative irrigation design tools. Create zones of similar watering needs with the Hydrozone tool and then use built-in worksheets to analyze for water efficiency, which makes satisfying a site's water budget allowance easier than ever.

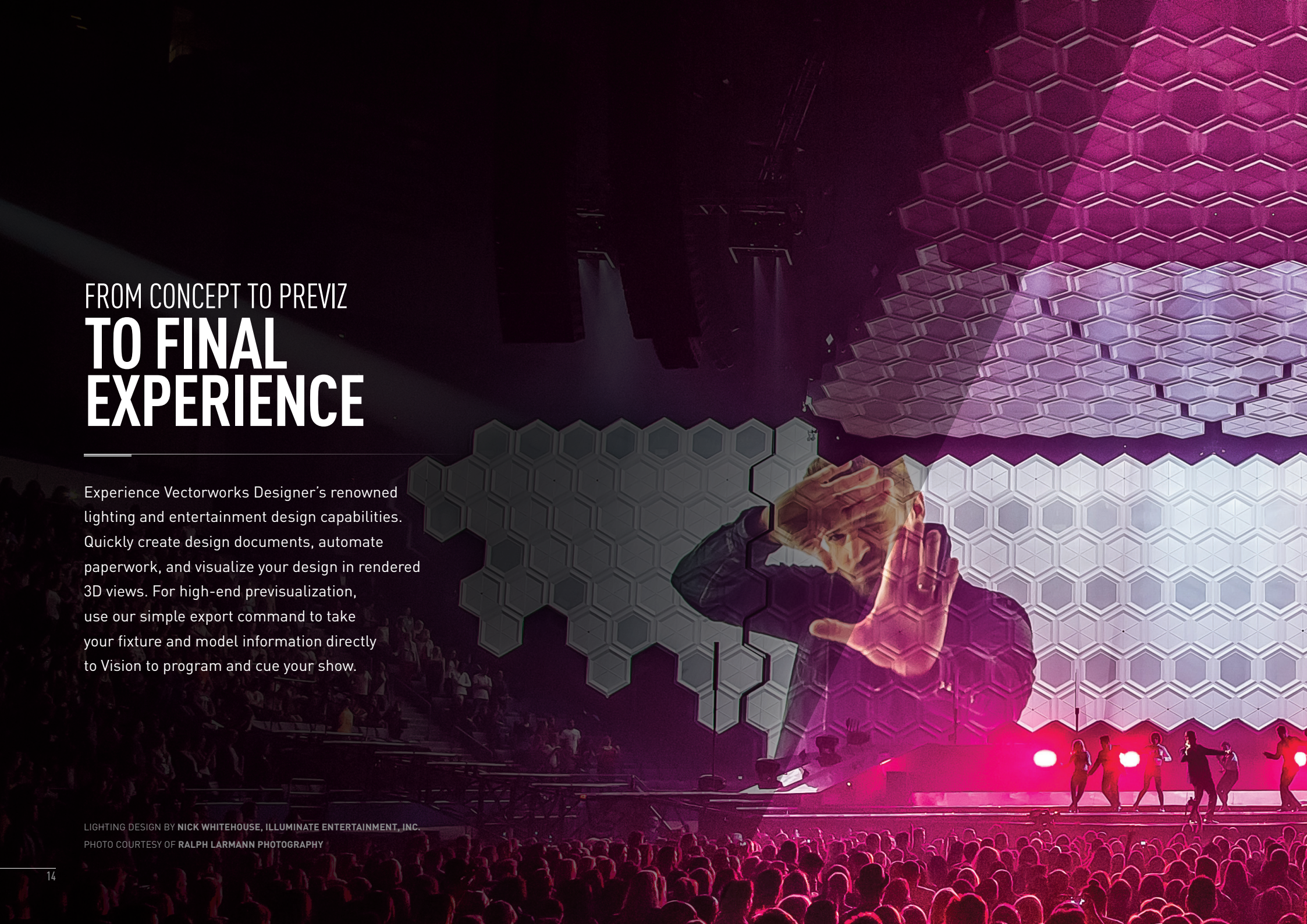




The background is a detailed architectural line drawing. It features a grid of bathroom fixtures, including sinks, toilets, and doors, arranged in rows. A diagonal line runs from the top left towards the bottom right, separating the lighter upper section from the darker lower section. In the lower section, a car is shown from a front-three-quarter view, and another car is shown from a side profile. The overall style is technical and precise.

SUPERIOR DOCUMENTATION

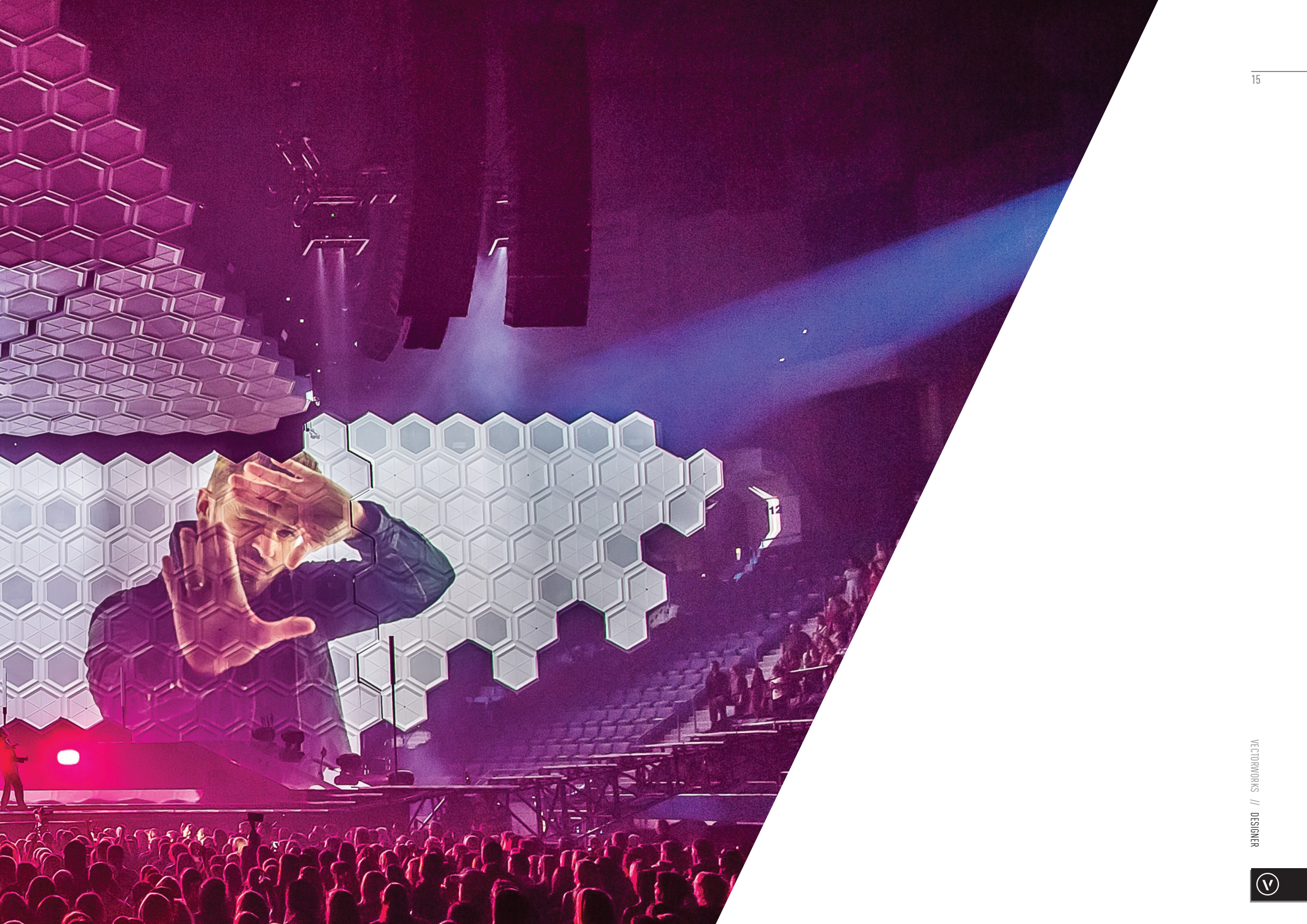
Vectorworks software's extensive suite of drawing and editing tools help you produce beautiful drawings and high-quality, professional documentation with ease. Define your signature look and meet industry standards with Vectorworks Designer's precision drafting tools, intelligent objects for building, sites, lighting, scenic, rigging, detailing, MEP, furniture, millwork, machine parts, and annotations, plus thousands of free symbols from leading building product companies. Batch print drawing sets or export them as multipage PDFs at full or reduced size.



FROM CONCEPT TO PREVIZ TO FINAL EXPERIENCE

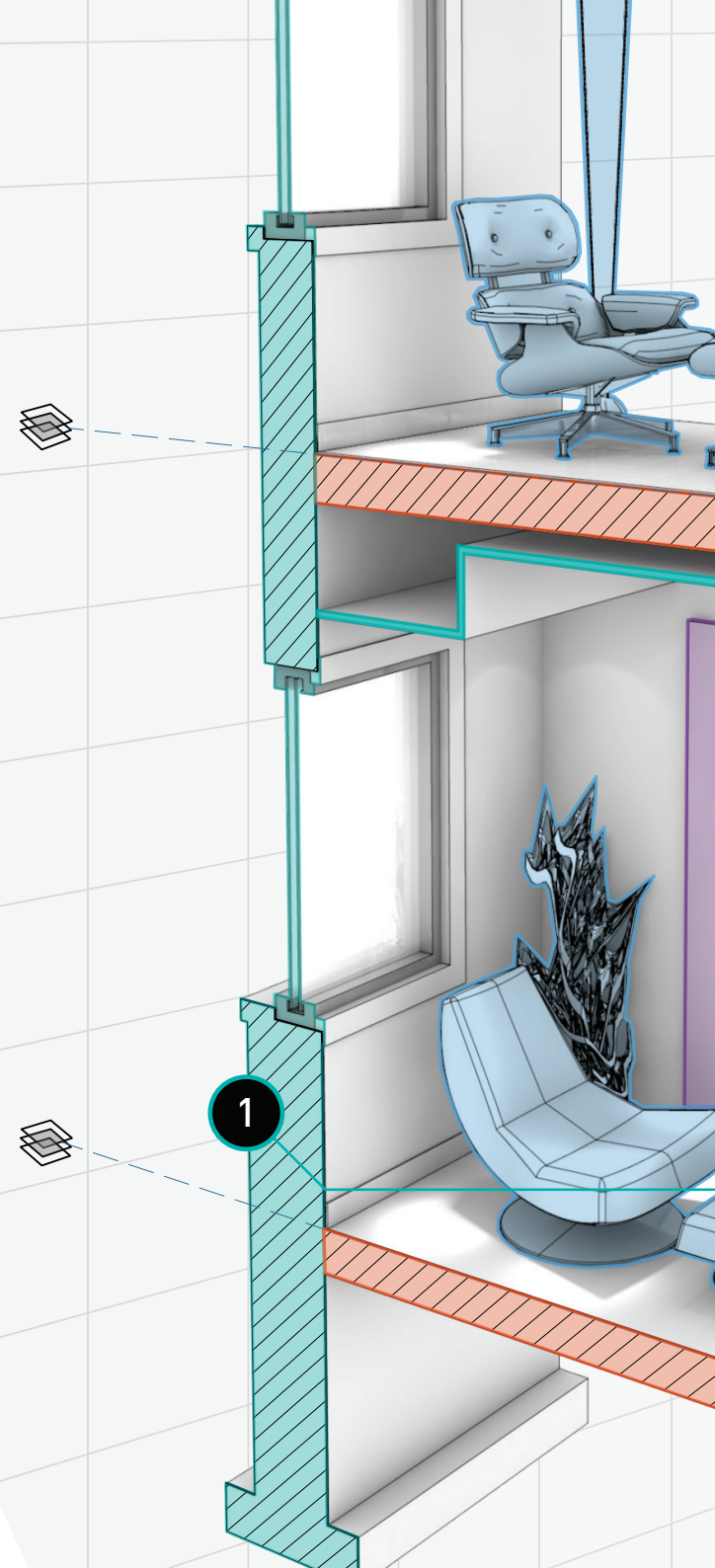
Experience Vectorworks Designer's renowned lighting and entertainment design capabilities. Quickly create design documents, automate paperwork, and visualize your design in rendered 3D views. For high-end previsualization, use our simple export command to take your fixture and model information directly to Vision to program and cue your show.

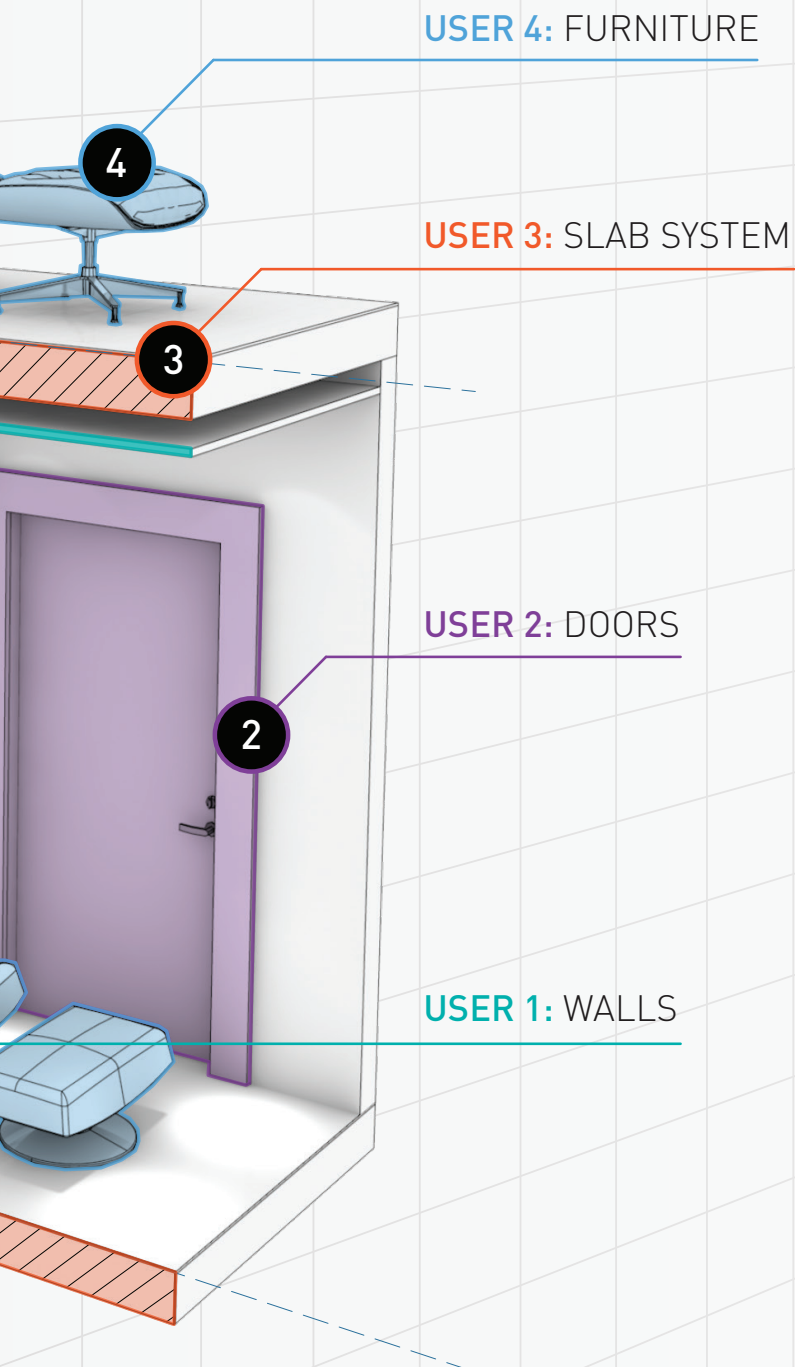
LIGHTING DESIGN BY NICK WHITEHOUSE, ILLUMINATE ENTERTAINMENT, INC.
PHOTO COURTESY OF RALPH LARMANN PHOTOGRAPHY



COORDINATE WITH YOUR PROJECT TEAM

Vectorworks Designer is engineered to facilitate your collaborative workflows. Design, document, and exchange your models within your firm and beyond with Revit import capabilities, IFC4 support, a BCF manager, and Raster PDF capabilities.



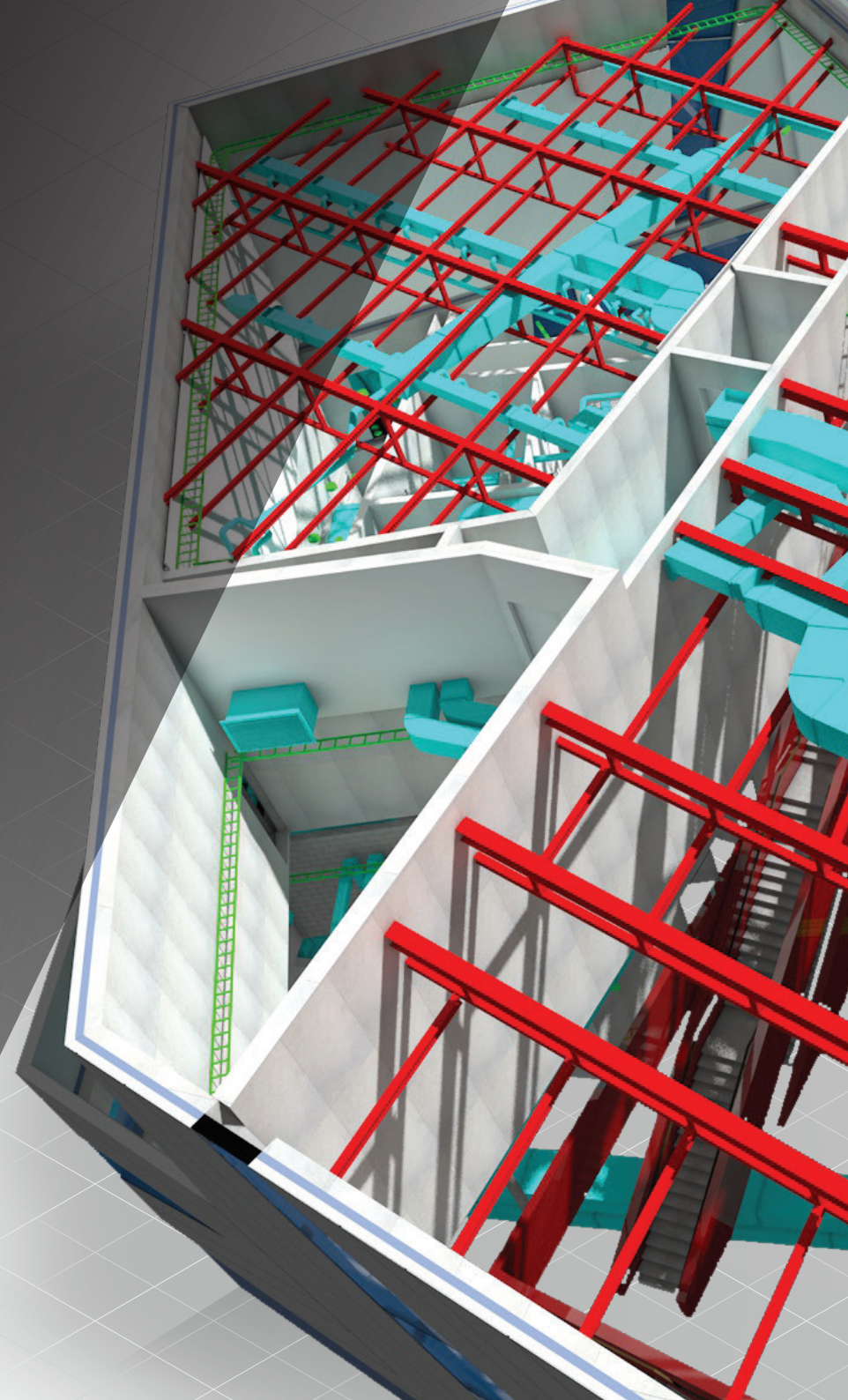


MULTI-USER ENVIRONMENT

Collaborate and maximize efficiency. Project sharing provides customizable multi-user workflows allowing your project team to work on the same Vectorworks file concurrently. It also frees you to work anywhere any time with cloud integration that lets you save your files in your Dropbox, OneDrive, Box, and Google Drive™ accounts.

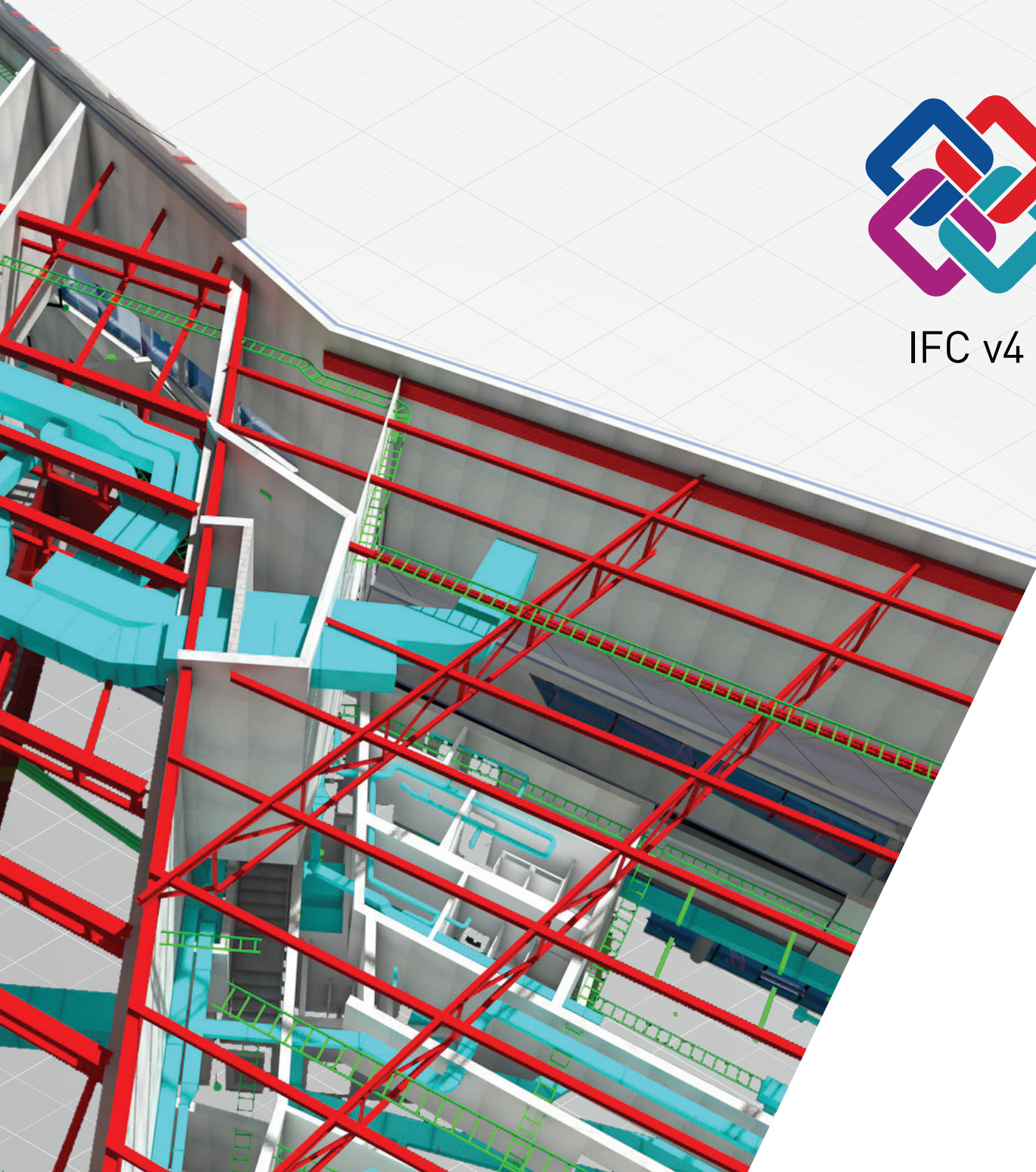
IFC SUPPORT FOR openBIM

Vectorworks supports the latest version of the buildingSMART data exchange standard, IFC4, enabling you to communicate with other IFC4-compatible BIM platforms for the next generation of openBIM workflows.





IFC v4



SHARE YOUR **VISION**

With the latest MAXON CineRender engine, rendered panoramas, high-quality shaders, and single-click model export for web viewing, Vectorworks Designer offers a suite of cutting-edge capabilities to create experiences for your clients that help you win more business.





DESIGNER



CONSULTANT



CLOUD SERVICES

Vectorworks is committed to communication and collaboration. Beginning with Vectorworks 2017, our Cloud Services environment became openly available to everyone, giving you the ability to easily share files between team members and providing a simple interface for collaborators and clients to tour your models using our mobile app, Vectorworks Nomad.



IMPRESS YOUR CLIENTS

With stunning, photorealistic renderings, you can include material selection options, make accurate lighting decisions, and generate high-quality documentation and presentation boards.

INTEGRATED RENDERING

All Vectorworks software packages include Renderworks®, the best-in-industry rendering feature set built on MAXON's CineRender. Renderworks provides the tools necessary to visualize your work throughout the design process while producing clear and accurate illustrations with stunning quality.

IMAGE INSPIRED BY HOLZER KOBLER ARCHITEKTUREN. RENDERING BY LMCAD STUDIO.

SYSTEM RECOMMENDATIONS

Performance of Vectorworks and Vision may vary depending on several factors, including hardware configurations and project types.

To get a full list of minimum system requirements and recommended hardware profiles, please visit vectorworks.net/sysreq/

Mac OS 10.12 (Sierra)
Mac OS X 10.11 (El Capitan)
Mac OS X 10.10 (Yosemite)

Windows 10 64-bit
Windows 8.1 64-bit
Windows 8 64-bit
Windows 7 SP1 64-bit

PROCESSOR

- E** 64-bit Intel Core i5 (or AMD equivalent) or better
- M** 64-bit Intel Core i5 (or AMD equivalent) clocked at 2GHz or better
- H** 64-bit Intel Core i7 (or AMD equivalent) clocked at 3GHz or better

RAM

- E** 4GB or more
- M** 8GB-16GB or more
- H** 16GB-32GB or more

Key:

- E** Entry-level profile
- M** Mid-level profile
- H** High-end profile
- V** Vision profile

GRAPHICS CARD

- E** OpenGL 2.1 compatible graphics card with 1GB of VRAM or more
- M** Dedicated OpenGL 2.1 compatible graphics card with 2GB-4GB of VRAM
- H** Dedicated OpenGL 2.1 compatible graphics card with 4GB of VRAM or more
- V** Dedicated OpenGL 3.0 compatible graphics card with 4GB of VRAM or more

SCREEN RESOLUTION

1920x1080 or higher recommended

NETWORK REQUIREMENTS FOR PROJECT SHARING

Project sharing requires high-speed network connections. As the network bandwidth increases, so does project sharing performance. Slower network speeds can still provide a satisfactory user experience if you minimize operations that transfer large amounts of data over the network (such as committing changes to the project file or refreshing a local working file).

A large, dark gray diagonal shape that starts from the top-left corner and extends towards the bottom-right, creating a modern, geometric background element.

ABOUT VECTORWORKS

Vectorworks cares about design. Since 1985, we have served the architecture, landscape, and entertainment industries, drawing inspiration from the world around us and encouraging the more than 650,000 designers who use our software to create experiences that transform the world.

Our commitment to develop the world's best cross-platform design software has taught us a simple truth: great design begins with the inspiration of the designer. Vectorworks supports that inspiration by guiding the exploration of discovery and finding creative solutions. We provide powerful tools to help designers capture ideas, nurture innovation, communicate effectively, and realize their vision.

Manufacturer : VECTORWORKS, INC.
Manufacturer Website : www.vectorworks.net

Sole Distributor of Vectorworks, Inc. in China and Hong Kong :

Mad Macs Technology Distributions Shanghai Limited.



Website : www.vectorworks.cn
Email : info@vectorworks.cn
Telephone [Shanghai] : +86 (21) 3221 2830 [Beijing] : +86 (10) 8478 6380

© 2018 Mad Macs Technology Distributions Shanghai Limited. All right reserved. All other trademarks and copyrights are property of their respective owners.
Vectorworks and Renderworks are registered trademarks of Vectorworks, Inc. | Braceworks is a trademark of Vectorworks, Inc