



VECTORWORKS®
FUNDAMENTALS

TRANSFORM THE WORLD.
**DESIGN WITH
VECTORWORKS.**





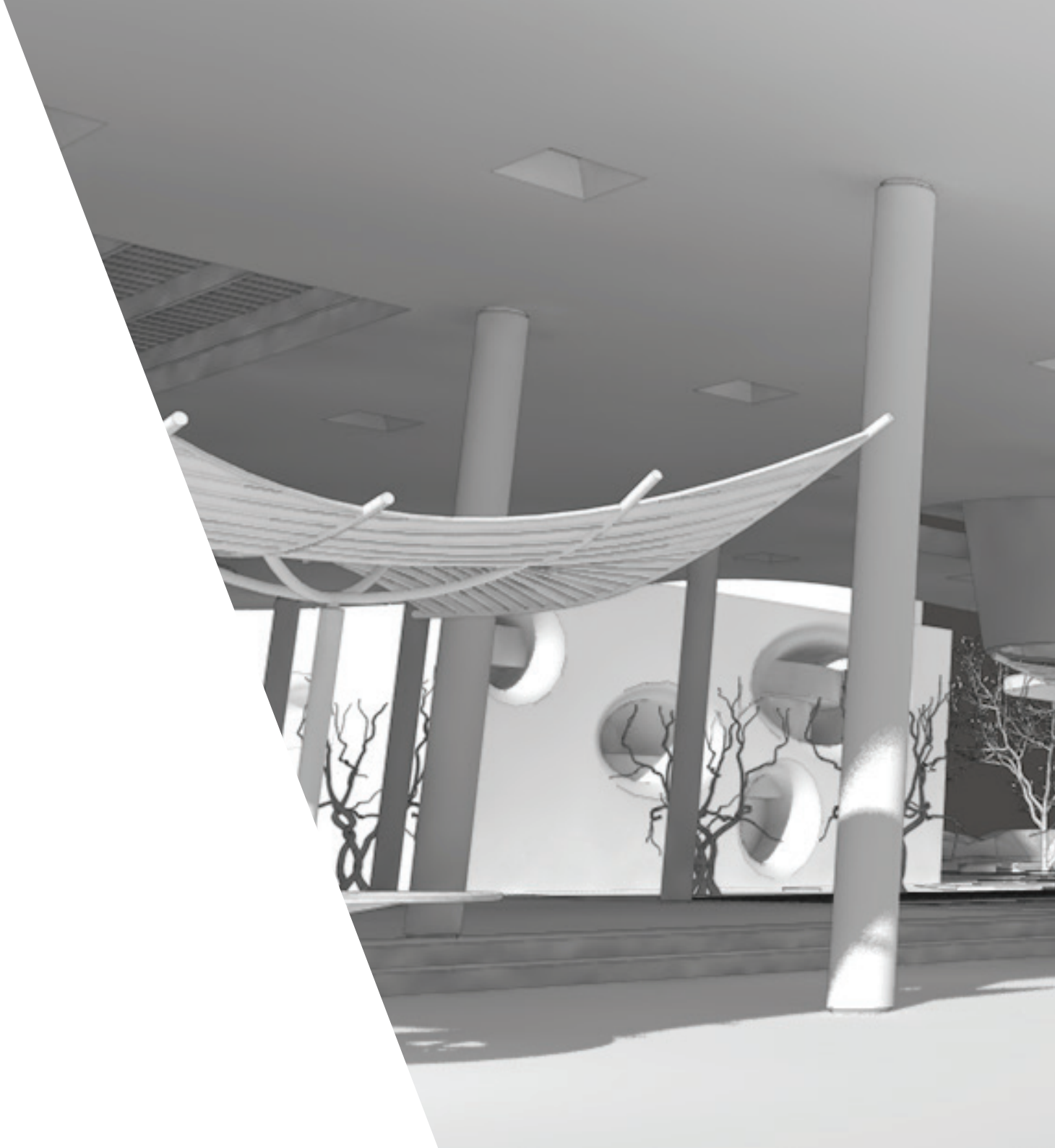
Vectorworks® Fundamentals software gives you the freedom to design in your own way. With a streamlined set of tools, you can capture and develop your ideas all in one place. Intuitive, 2D/3D modeling capabilities, combined with best-in-industry, integrated rendering tools, will transform your design process and help you produce beautiful drawings and high-quality, professional documentation with ease.

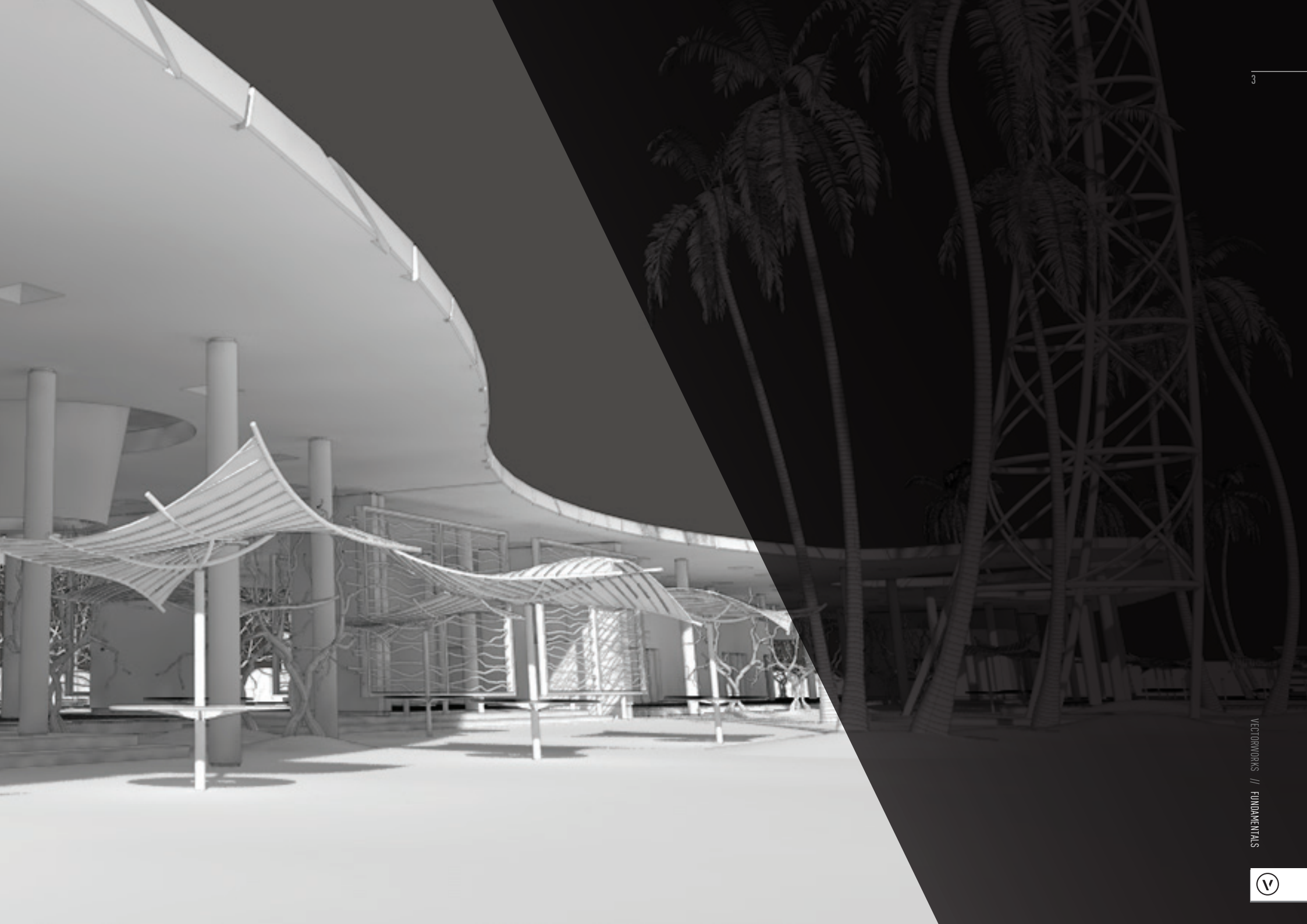
Explore what you can do with Vectorworks Fundamentals.

SIMPLIFY YOUR **WORKFLOWS**

Vectorworks Fundamentals gives you a robust suite of resources to optimize your workflows. Whether you're drafting or preparing to share a model with your project team, Vectorworks software offers features and tools that are designed with you and your workflows in mind.

IMAGE COURTESY OF CAEDRO

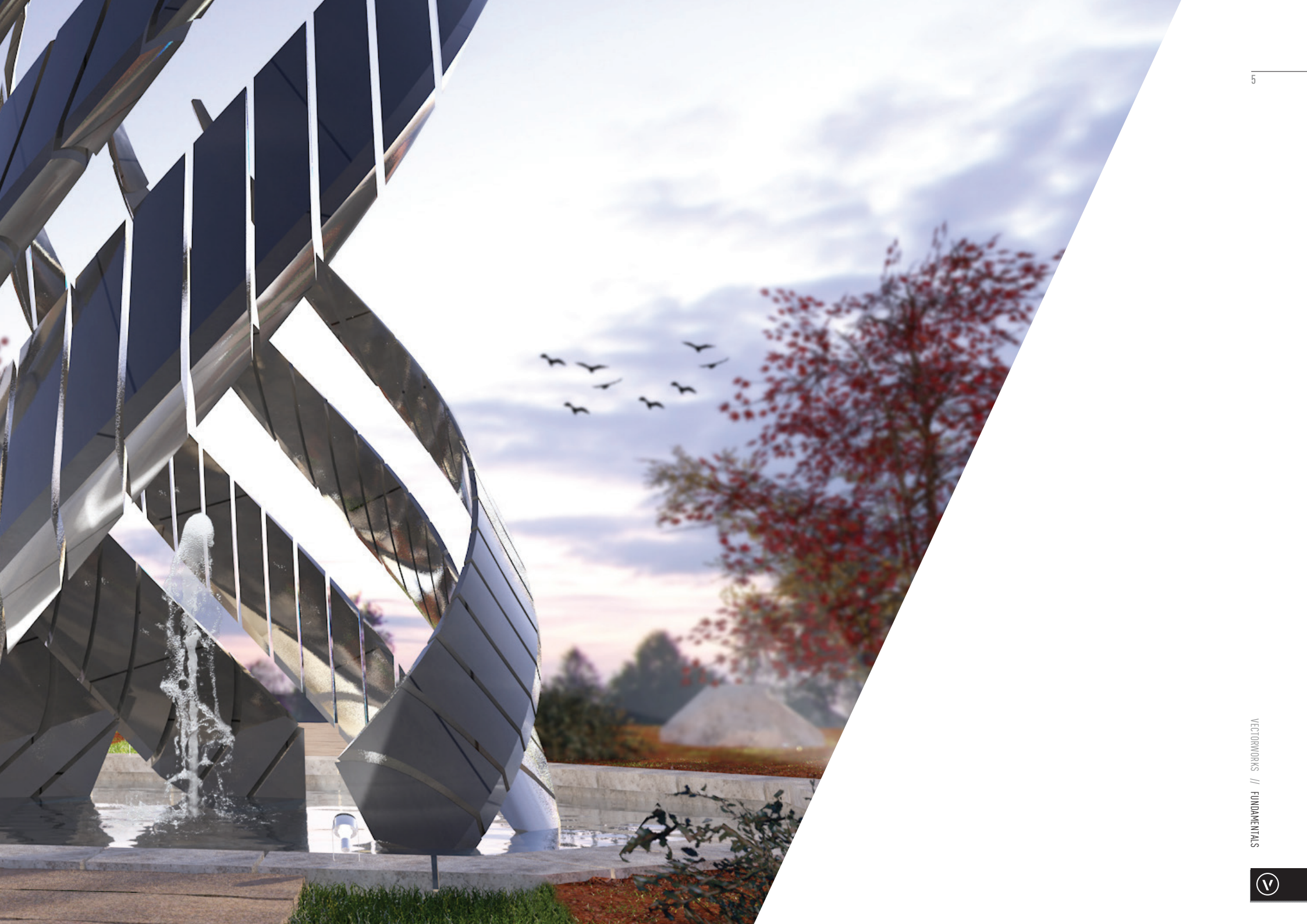




CREATIVE MODELING SOLUTIONS

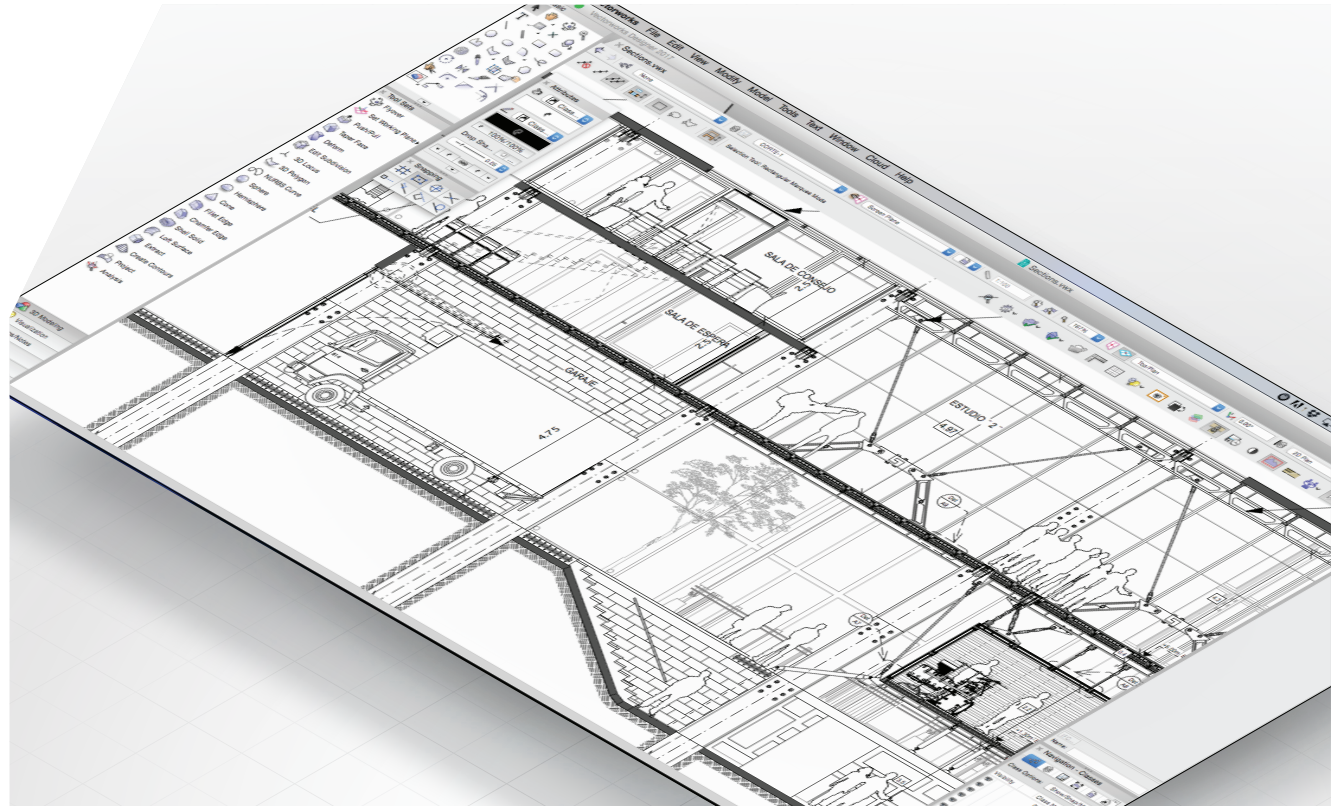
Design without limitations. Vectorworks Fundamentals provides an advanced suite of Parasolid-based solids and NURBS surface tools that let you create any shape and easily explore geometry. Push, pull, blend, twist, sculpt, deform, or punch holes.

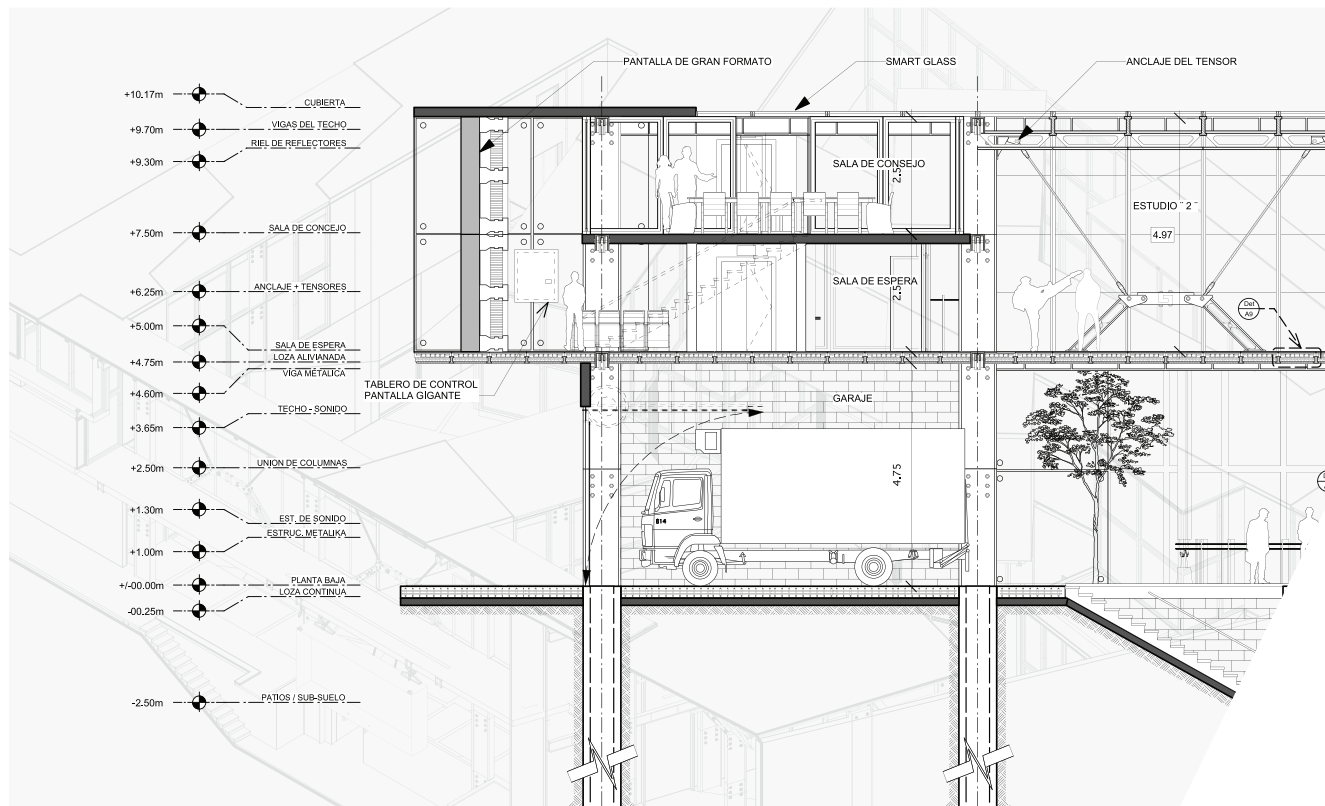
Fundamentals also features SmartCursor™ technology that gives you hints to design more accurately. Subdivision modeling tools can transform primitive shapes into smooth, malleable surfaces so you can craft sculpted objects, custom furniture, and more. With our software, you can create any form.



INTUITIVE INTERFACE AND **DRAFTING TOOLS**

Do what you do best — design. Fundamentals' customizable interface and intuitive display make it easier to learn and use than other design applications. Our software enhances the design process, delivering intuitive drafting tools that empower you to keep your creative edge.





SUPERIOR 2D DOCUMENTATION

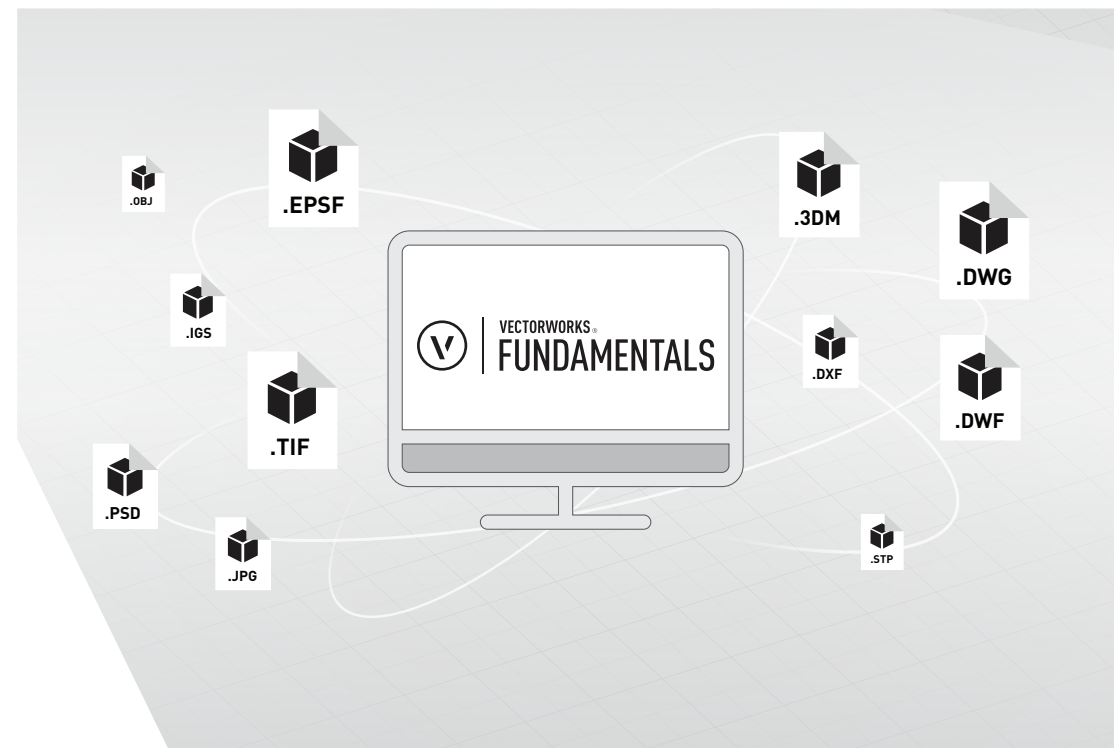
Our streamlined drafting environment includes a suite of drawing and editing tools that make quick work of any type of project. Explore parametric constraints that maintain relationships between 2D objects.

Use a full spectrum of dimensioning tools that support common standards. Take advantage of text and notation capabilities that make your drawings even more powerful. For your finishing touches, stylize the text with a choice of fonts and sizes, check your spelling, and extrude text into 3D.

SEAMLESS INTEROPERABILITY

Exchange NURBS models with Rhino software or concept models with a variety of modeling software packages. Support of both import and export of OBJ and STL file formats lets you explore the full range of design options by incorporating information from multiple sources, making sweeping changes quickly and easily.

Using several other common file formats, you can communicate effectively with your consultants and collaborators who may be using other CAD software. Vectorworks Fundamentals offers support for exchanging 3D models and drawings using DWG, DXF, DWF, C4D, and STL.



VECTORWORKS FUNDAMENTALS FILE IMPORT/EXPORT CAPABILITIES

FILE TYPE	IMPORT	EXPORT	FILE TYPE	IMPORT	EXPORT	FILE TYPE	IMPORT	EXPORT
C4D Textures	●		IGS/IGES	●	●	Rhino (.3DM)	●	●
Collada		●	IMAGE FILES (GIF, BMP, TIF, JPG, PNG)	●	●	SAT	●	●
Database	●	●	OBJ	●	●	Script	●	●
DWG/DXF/DWF	●	●	Parasolid X-T	●	●	STP/STEP	●	●
FBX		●	PDF		●	STL	●	●
HDR/HDRI	●	●	Photoshop (.PSD)	●	●	Worksheet	●	●

SHARE YOUR VISION

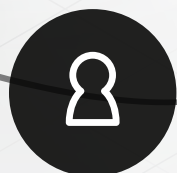
With the latest MAXON CineRender engine, rendered panoramas, high-quality shaders, and single-click model export for web viewing, Vectorworks Fundamentals offers a suite of cutting-edge capabilities to create experiences for your clients that help you win more business.



DESIGNER



CONSULTANT



CLOUD SERVICES

Vectorworks is committed to communication and collaboration. With Vectorworks Fundamentals, our Cloud Services environment is openly available to everyone, giving you the ability to easily share files between team members and providing a simple interface for collaborators and clients to tour your models using our mobile app, Vectorworks Nomad. You can also use Cloud Services with Google Drive™ and Dropbox.

HIVE

HYPER • INTERACTIVE
VIRTUAL ENVIRONMENT

TOKYO POP LAB COMPETITION 2016

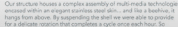
TOKYO is one of the largest cities in the world and is home to a young and technologically sophisticated population. The makes it the perfect city to launch the first HIVE Pop Lab concept.

Like all conceptual cities, Hive needs to be an integrated one. From needs to opportunities to enhance the quality of life for its citizens. Consequently, our first design objective was to create a large and vibrant space for the city to use. The main program factors of the building, but our goal is to create a vibrant and interactive space for the city to use.

So we began to challenge ourselves by questioning and exploring the potential for a new kind of popular culture experience, one that would harness the power of generative movement by visitors of people worldwide. Our mission was to create a space that would be a vibrant and interactive space for the city to use, not only as a gathering ground for new culture of the future, but also as an iconic landmark that can be seen throughout the city.

The concept behind the tower is based on the principle of the center. It is a place that serves as a center of activity for counteracting people who go out into the world to make their connections through dedicated efforts focused on the common good of all.

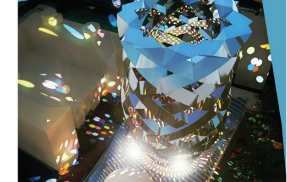
Our structure houses a complex assembly of real-world technologies around an open digital center core, and the building hangs from above. By suspending the shell we were able to provide for a diverse range of possibilities to open space each hour.



HIVE

HYPER • INTERACTIVE
VIRTUAL ENVIRONMENT

TOKYO POP LAB COMPETITION 2016



For special events the tower provides a dazzling nighttime laser light show that uses surrounding buildings and more distant towers as its paint palette. The slowly turning structure reflects and bounces light, pushing out splashes of color that become the literal embodiment of architectural fireworks.



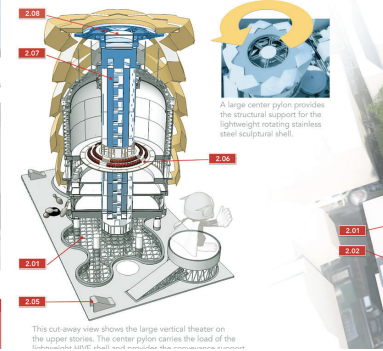
The center of the Pop Lab underground facility is illuminated by a relative skylight system that resembles a reflecting pond from the plaza.

INDICATED NOTES

- 2.01 - Skylight System
- 2.02 - Entry Access Structure
- 2.03 - Interactive Motion Platform
- 2.04 - Structural Center Pylon



THE FLEXIBLE OUTDOOR PLAZA BRINGS SPONTANEOUS STREET LIFE



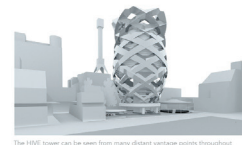
A large center pylon provides the structural support for the lightweight rotating stainless steel sculptural shell.

This cut-away view shows the large vertical theater on the upper stories. The center pylon carries the load of the interactive shell and provides the necessary support.

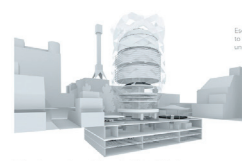
HIVE

HYPER • INTERACTIVE
VIRTUAL ENVIRONMENT

TOKYO POP LAB COMPETITION 2016



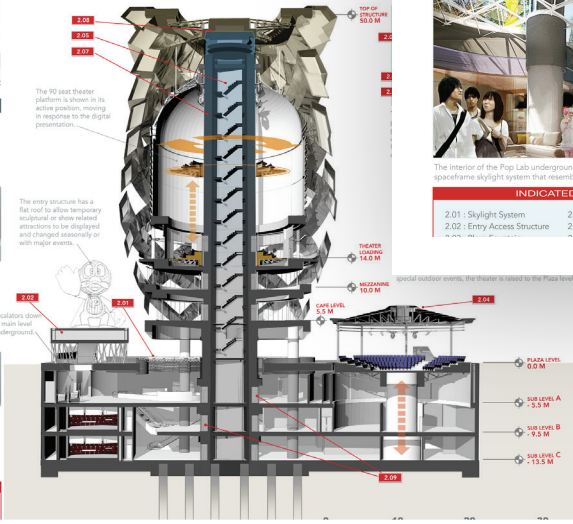
The HIVE tower can be seen from many distant vantage points throughout Tokyo and become the iconic image of the activities it houses.



Under the open plaza are 3 floors of exhibition halls, classrooms, meeting rooms, and a 300 seat forum that also serves the public as an amphitheater when tilted into the plaza level position.

INDICATED NOTES

- 2.01 - Skylight System
- 2.02 - Entry Access Structure
- 2.03 - Interactive Motion Platform
- 2.04 - Structural Center Pylon

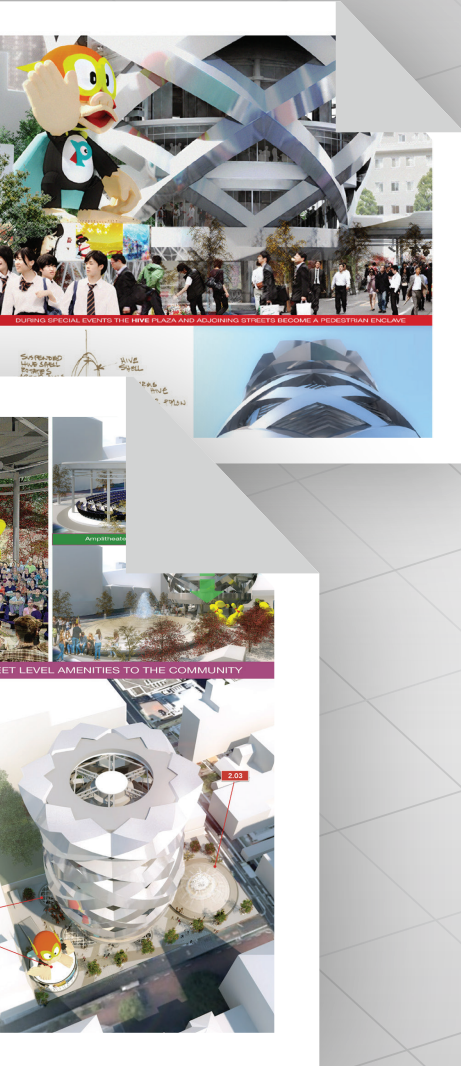


The 90 seat theater platform is shown in its active position, moving in response to the digital presentation.

The entry structure has a flat roof to allow temporary structural or show related attractions to be displayed and changed seasonally or with major events.

Escalators down to main level underground.

Special outdoor events, the theater is raised to the Plaza level.



ENDLESS IMAGES

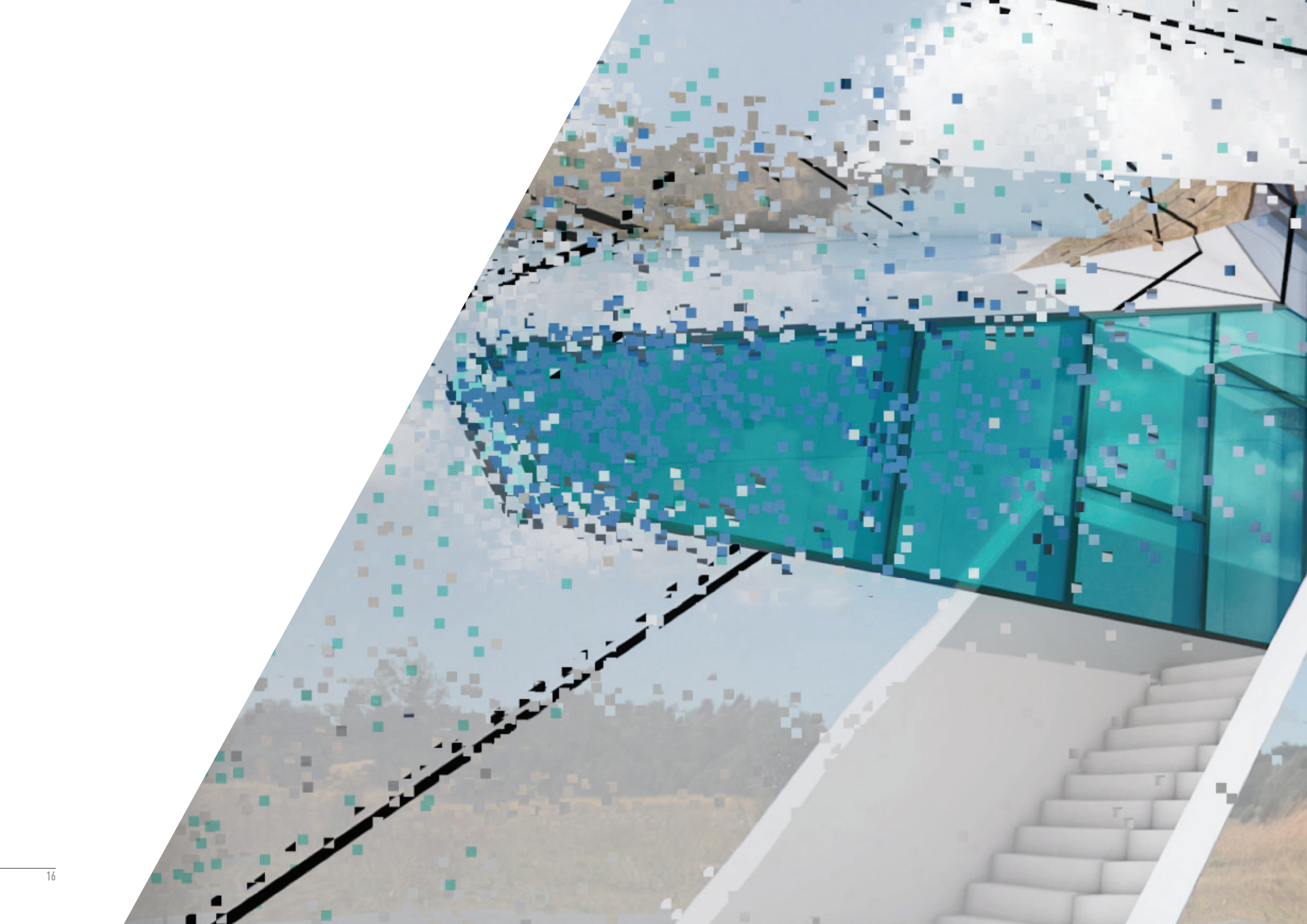
Make your work even more compelling and easier to communicate with digital imagery. Import scans, digital photos, or web images. Import or export a wide array of image files, including Illustrator® EPS and native Photoshop® PSD files. Also, export your design for inclusion in your firm's marketing materials or website.



IMPRESS YOUR CLIENTS

With stunning, photorealistic renderings, designers can showcase material selection options, make effective lighting decisions, and generate high-quality documentation and presentation boards. With Vectorworks Fundamentals, you have all the tools necessary to wow your clients.



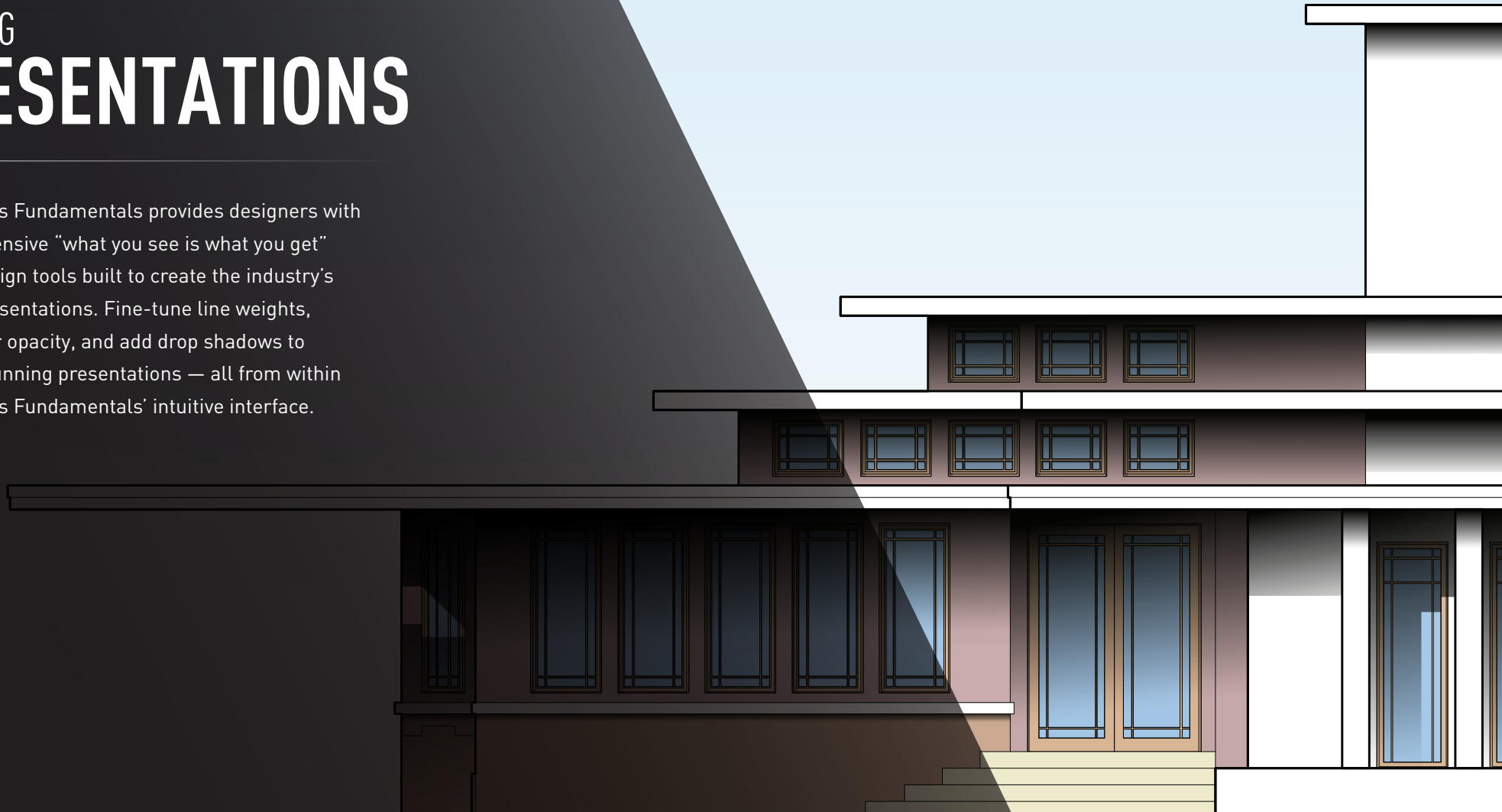


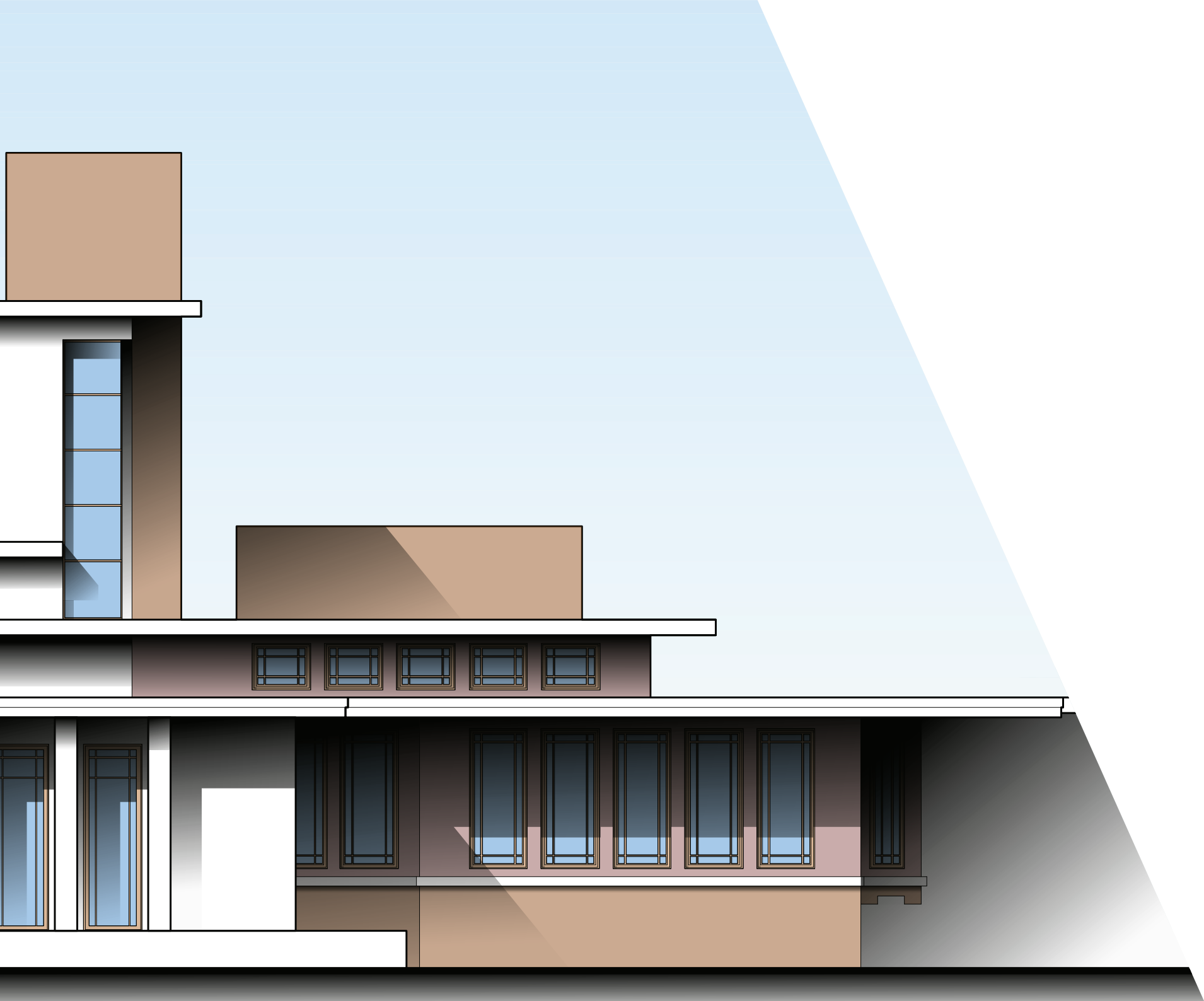
INTEGRATED RENDERING

Vectorworks Fundamentals includes Renderworks®, the best-in-industry rendering feature set built on MAXON's CineRender engine. Renderworks provides the tools necessary to visualize your work throughout the design process while producing clear and accurate illustrations.

WINNING PRESENTATIONS

Vectorworks Fundamentals provides designers with a comprehensive “what you see is what you get” suite of design tools built to create the industry’s best 2D presentations. Fine-tune line weights, adjust color opacity, and add drop shadows to produce stunning presentations — all from within Vectorworks Fundamentals’ intuitive interface.





SYSTEM RECOMMENDATIONS

Performance of Vectorworks may vary depending on several factors, including hardware configurations and project types. To get a full list of minimum system requirements and recommended hardware profiles, please visit vectorworks.net/sysreq/

Mac OS 10.12 (Sierra)
Mac OS X 10.11 (El Capitan)
Mac OS X 10.10 (Yosemite)

Windows 10 64-bit
Windows 8.1 64-bit
Windows 8 64-bit
Windows 7 SP1 64-bit

PROCESSOR

- E** 64-bit Intel Core i5 (or AMD equivalent) or better
- M** 64-bit Intel Core i5 (or AMD equivalent) clocked at 2GHz or better
- H** 64-bit Intel Core i7 (or AMD equivalent) clocked at 3GHz or better

RAM

- E** 4GB or more
- M** 8GB-16GB or more
- H** 16GB-32GB or more

Key:

-
- E** Entry-level profile
 - M** Mid-level profile
 - H** High-end profile

GRAPHICS CARD

- E** OpenGL 2.1 compatible graphics card with 1GB of VRAM or more
- M** Dedicated OpenGL 2.1 compatible graphics card with 2GB-4GB of VRAM
- H** Dedicated OpenGL 2.1 compatible graphics card with 4GB of VRAM or more

SCREEN RESOLUTION

1920x1080 or higher recommended

NETWORK REQUIREMENTS FOR PROJECT SHARING

Project sharing requires high-speed network connections. As the network bandwidth increases, so does project sharing performance. Slower network speeds can still provide a satisfactory user experience if you minimize operations that transfer large amounts of data over the network (such as committing changes to the project file or refreshing a local working file).



ABOUT VECTORWORKS

Vectorworks cares about design. Since 1985, we have served the architecture, landscape, and entertainment industries, drawing inspiration from the world around us and encouraging the more than 650,000 designers who use our software to create experiences that transform the world.

Our commitment to develop the world's best cross-platform design software has taught us a simple truth: great design begins with the inspiration of the designer. Vectorworks supports that inspiration by guiding the exploration of discovery and finding creative solutions. We provide powerful tools to help designers capture ideas, nurture innovation, communicate effectively, and realize their vision.

Manufacturer : VECTORWORKS, INC.
Manufacturer Website : www.vectorworks.net

Sole Distributor of Vectorworks, Inc. in China and Hong Kong :

Mad Macs Technology Distributions Shanghai Limited.



Website : www.vectorworks.cn
Email : info@vectorworks.cn
Telephone (Shanghai) : +86 (21) 3221 2830 (Beijing) : +86 (10) 8478 6380

© 2018 Mad Macs Technology Distributions Shanghai Limited. All right reserved. All other trademarks and copyrights are property of their respective owners.
Vectorworks and Renderworks are registered trademarks of Vectorworks, Inc. | Braceworks is a trademark of Vectorworks, Inc